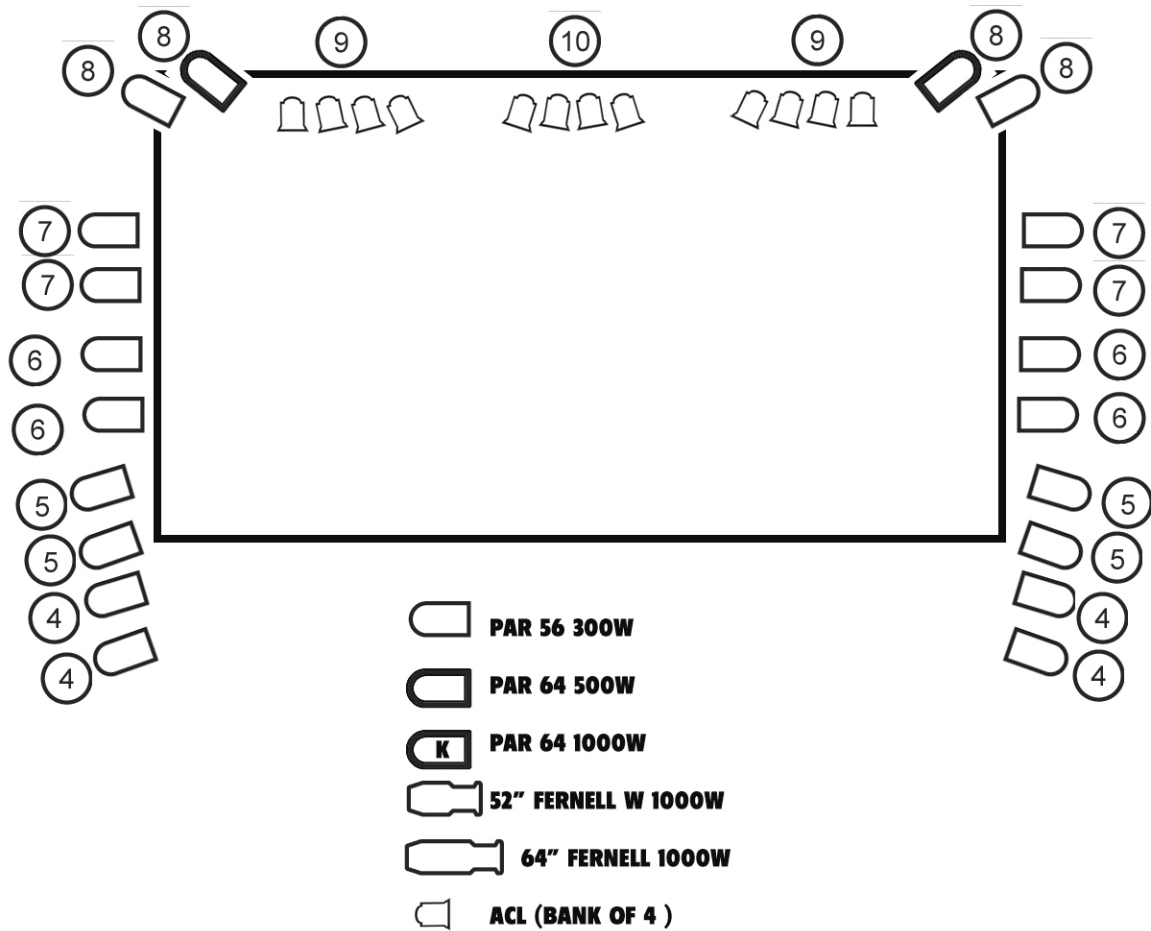


REGENT THEATRE LIGHTING PLOT



Any and all alterations to this, the House Hang, must be restored.

Channel lamps color

| | | |
|----|-------|-----------------------------|
| 01 | 2 | n/a architectural not shown |
| 02 | 2 | n/a cross curtain not shown |
| 03 | | not in use |
| 04 | 4 | amber/yellow |
| 05 | 4 | amber/yellow |
| 06 | 4 | red |
| 07 | 4 | blue |
| 08 | 4 | red/amber |
| 09 | 2(x4) | n/a |
| 10 | 1(x4) | n/a |
| 11 | | not in use |
| 12 | | not in use |
| 13 | 1 | amber |
| 14 | 2 | red |
| 15 | 1 | n/a |
| 16 | 1 | n/a |
| 17 | 1 | n/a |
| 18 | 1 | n/a |
| 19 | 1 | amber |
| 20 | 2 | blue |
| 21 | 1 | n/a |
| 22 | 1 | n/a |
| 23 | 1 | n/a |
| 24 | 1 | n/a |

